

# State University System of Florida

---

## Our Public University System

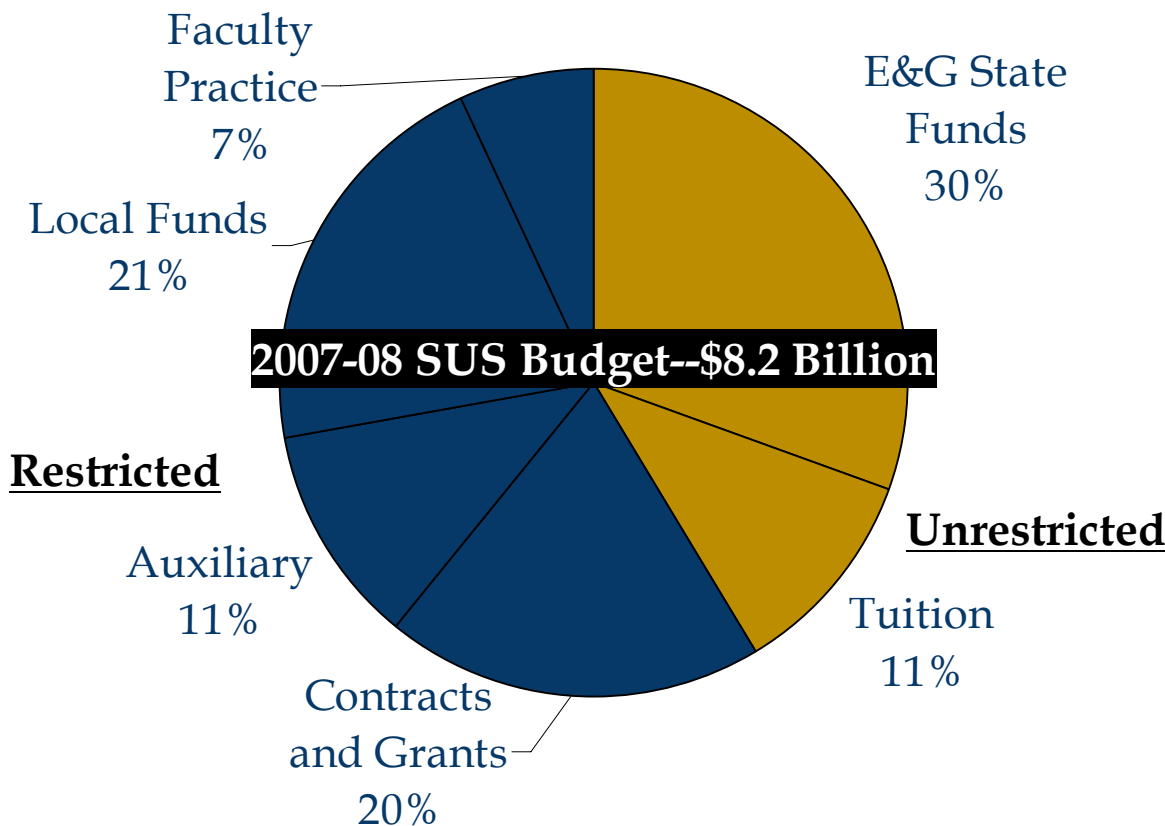
Presented to  
Lakeland Area Chamber of Commerce  
Chairman's Circle  
Spring Business Luncheon

Mark B. Rosenberg, Chancellor  
May 20, 2008



# How Big is the SUS?

- 301,000 students (Fall 2007)
  - 57% female, 14% black, 17% Hispanic
  - 77% undergraduates
- 64,800 degrees awarded (2006-07)
  - 47,300 bachelor's, 17,500 graduate
- Nearly 11,000 ranked faculty and 62,000 total employees (2006-07)



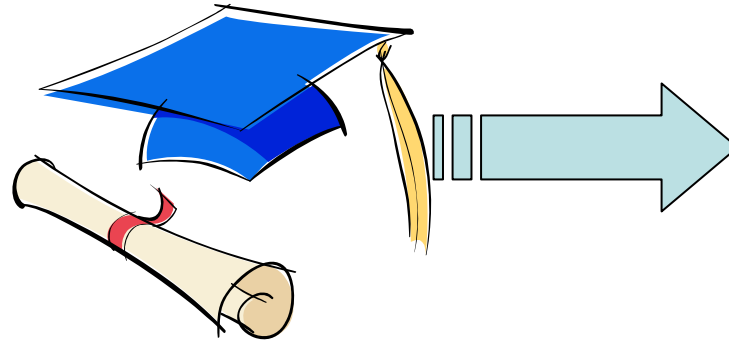
# Meeting the Need for Bachelor's Degrees by 2028

- 46<sup>th</sup> in bachelor's degrees awarded per capita
- 2.5 million adults – 27% of 25-64 population – have a bachelor's degree or higher vs. 33% in 10 states with highest GDP per capita
- Economic impact:
  - Actual size of Florida's economy: \$610 billion
  - If Florida were a top-10 state: \$790 billion
  - Productivity gap: **-\$180 billion**
- 3.9 million adults with bachelor's degrees to reach 33% by 2028 – 1.4 million more than today



# ROI: Economic Impact of a Bachelor's Degree

- **Approx. \$20,000 annually in additional earnings over HS Diploma**



- *\$2,000 more in annual state/local taxes*
- *\$50,000 more in state/local taxes over 25 years*

- **50,000 annual degrees = \$25 billion more in career income, \$2.5 billion in long-term state/local tax revenue**



# Centers of Excellence 2007-08: Highlights

## Maintaining Florida's Competitive Edge: Universities play critical role in research discovery

### **USF: Biomolecular Identification and Targeted Therapeutics**

Molecular Identification Core Equipment Facility; 5,000-square-foot research and development laboratory for Romark Laboratories; technology related to detection of ovarian cancer has been licensed by Geopharma, Inc.

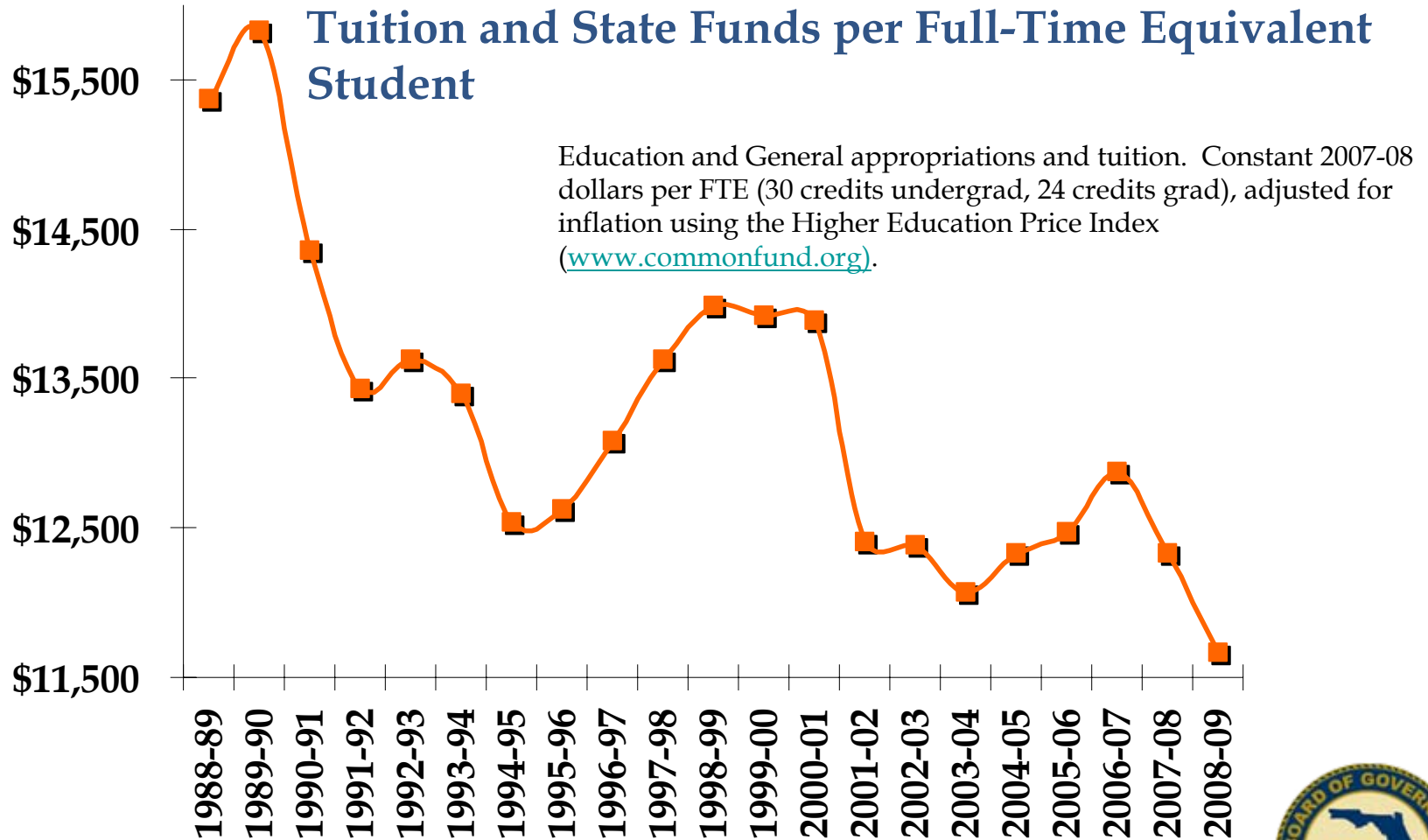
### **UCF: Laser Technology Initiative**

Developing advanced laser technologies aligned with state and national objectives to drive Florida toward capturing emerging markets in key sectors of laser industry.



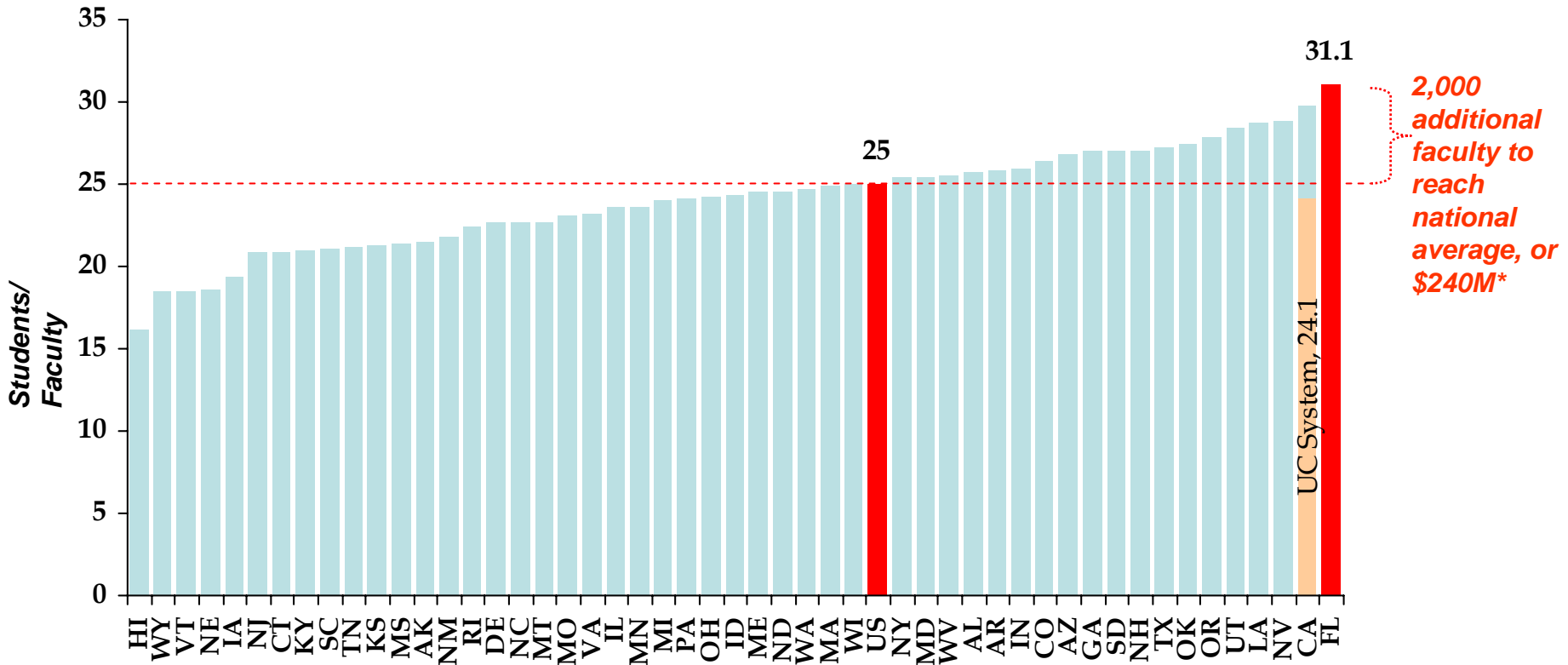
# What Counts is Funding per FTE: We Are at a 20-Year Low

State Funds and Tuition per FTE Student



# The Result is Deteriorating Quality

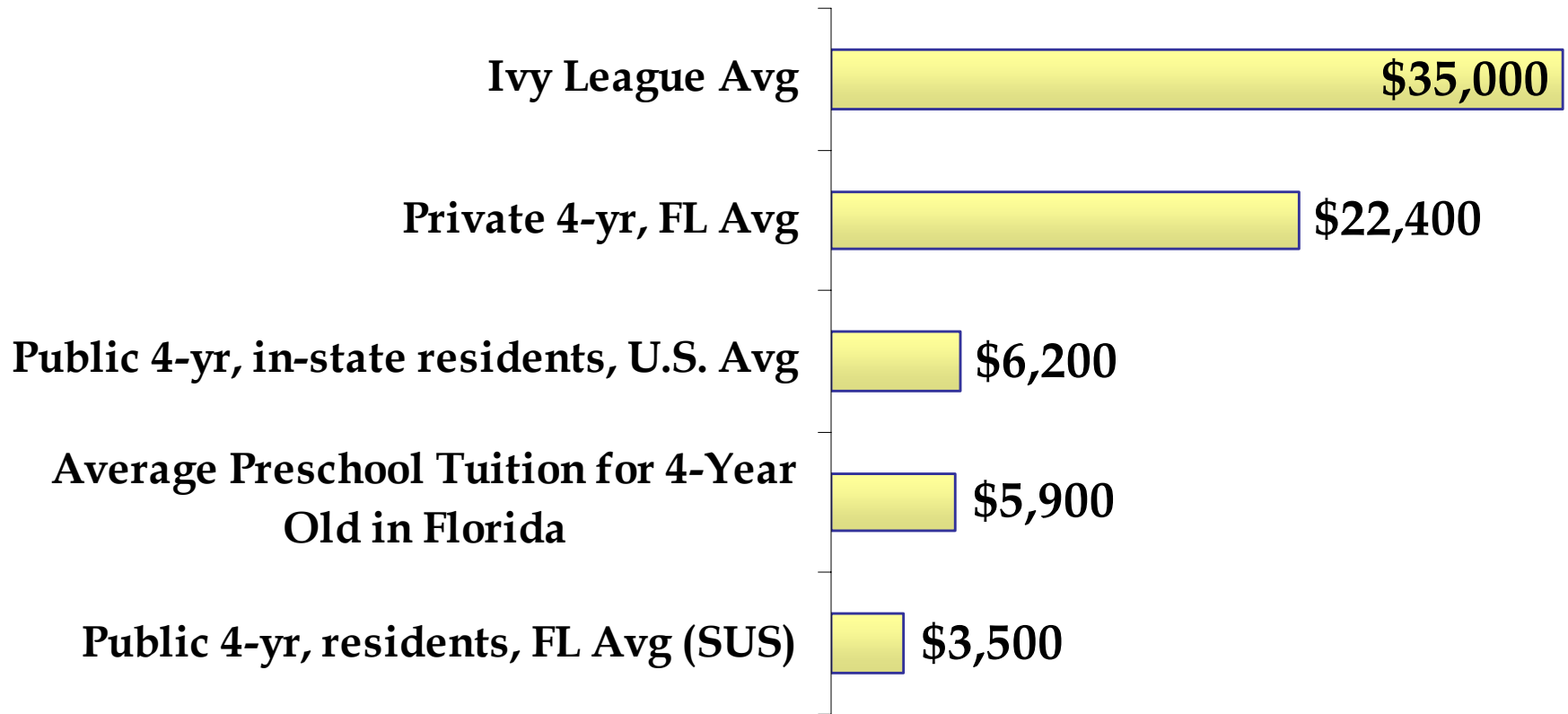
## Florida has the worst student-faculty ratio in the country



Note: Faculty are full-time tenured or tenure-track faculty.



# SUS Tuition and Fees Are Lowest in U. S.



Sources: College Board, Trends in College Pricing 2007-08, Ivy League University Websites, National Association of Childcare Resource and Referral Agencies, Florida Board of Governors.



# Where Do We Want to Go Over Next 20 Years?

- **Double research and development activity over 20 years**
  - *Transform Florida into a venture-capital magnet*
  - *Become leading state in two or three emerging industries*
- **Double the number of bachelor and advanced degree graduates who are . . .**
  - *Competent in cutting edge technologies*
  - *Capable of creating new technologies*
  - *Resilient and adaptable as new ideas emerge*



# How Do We Restore Competitiveness and Meet Need?

- Enhance need-based aid
- Move tuition to national average
- Address Bright Futures & Prepaid
- Develop performance-based funding

